

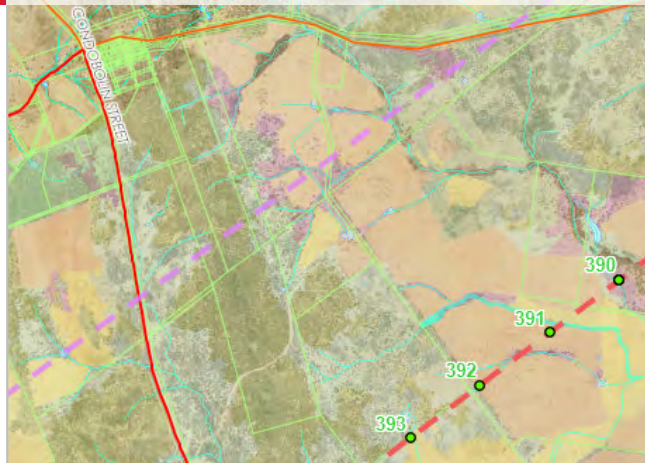
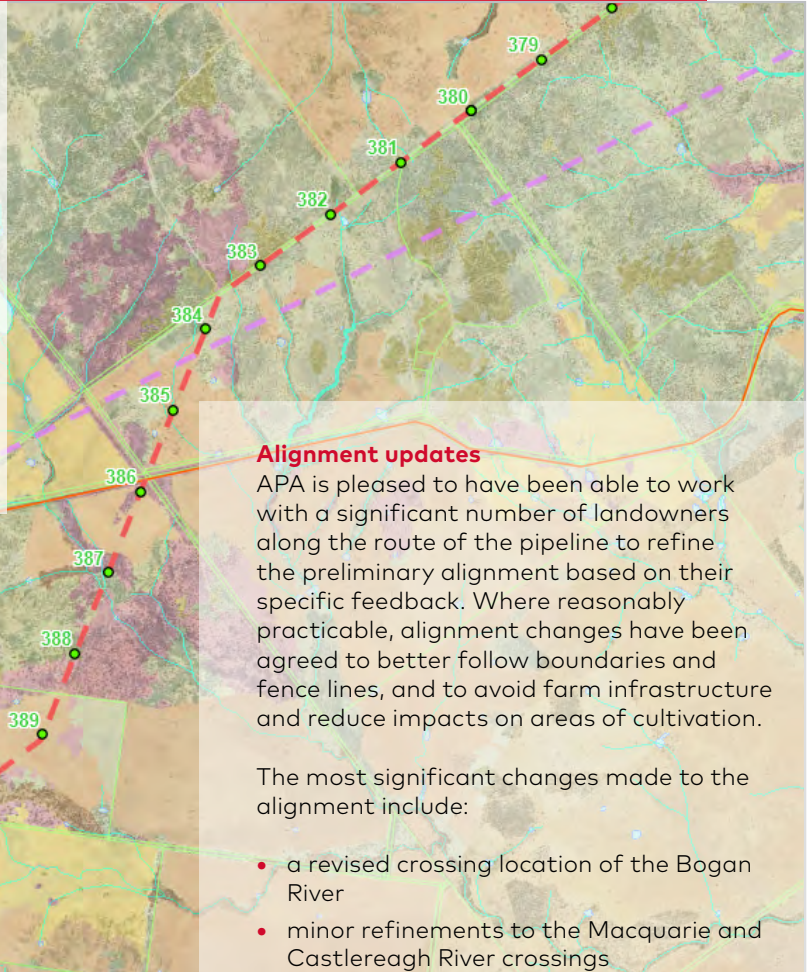
Western Slopes Pipeline activity update.



October 2017

APA is committed to ensuring that landowners and other stakeholders have access to relevant information regarding the Western Slopes Pipeline project. Key items for this update include:

- alignment updates
- community consultation summary and upcoming events
- field survey summary
- regional gas supply opportunities



Alignment changes in the Bobadah Area (preliminary alignment in purple, current alignment in red)



Why should I talk to APA?

APA is aware that some project opponents are advising landowners that refusing to engage with APA is the best way to respond to the Project. We respectfully suggest this is misinformed and runs counter to the best interests of individual landowners.

Engaging with APA allows us to respond to your feedback, whether through revisions to the alignment or commitments to specific design or construction measures. Whilst we will always work to accommodate landowner requests, our ability to make changes to the alignment will reduce as the project progresses through the assessment process. It is therefore important that landowners take the opportunity to engage with APA now.

We again invite any landowner along the proposed pipeline alignment who is yet to discuss the Project with APA to contact our project team on 1800 941 145, or by email at westernslopespipeline@apa.com.au.

Alignment updates

APA is pleased to have been able to work with a significant number of landowners along the route of the pipeline to refine the preliminary alignment based on their specific feedback. Where reasonably practicable, alignment changes have been agreed to better follow boundaries and fence lines, and to avoid farm infrastructure and reduce impacts on areas of cultivation.

The most significant changes made to the alignment include:

- a revised crossing location of the Bogan River
- minor refinements to the Macquarie and Castlereagh River crossings
- realignment in the area outside of Tottenham to better follow property boundaries in response to feedback from a number of landowners
- realignment in the area near Bobadah to avoid areas of prospective mineralisation subject to current mining exploration tenements.

As a result of these updates, the overall length of the proposed pipeline has slightly increased to 460km, but the number of landowners affected by the alignment has been reduced. Updated maps have been sent to landowners where material changes have been made. Those owners no longer affected by the proposed pipeline have also been notified.

New maps of the current proposed alignment are now available on the APA website under the [Information for Landowners](#) tab. APA will be using this modified alignment as the basis for the Environmental Impact Statement which is currently being prepared.

consultation update.

Community Consultative Committee (CCC)

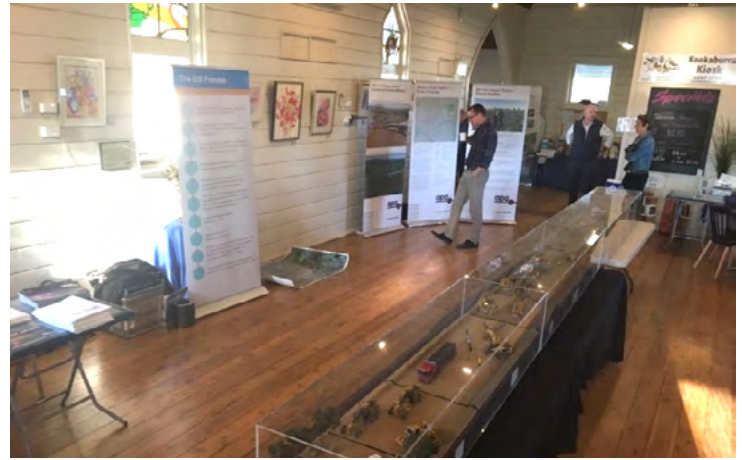
The first meetings of the Western Slopes Pipeline CCC were held in Narrabri and Warren on September 13 & 14 respectively. Given the length of the proposed pipeline, the CCC is operating as two committees - one in the northern section with meetings in Narrabri and Coonamble; and a southern committee servicing the Warren and Tottenham regions.

APA thanks all members of the CCC for their participation and constructive contribution to the process. A wide range of views regarding the Project were aired and APA appreciated the opportunity to share information and address a number of items of concern to committee members. The Independent Chair of the CCC, Mr Michael Silver, has now released the minutes from both meetings. These can be found on the Project website at <https://www.apa.com.au/about-apa/our-projects/western-slopes-pipeline/community-consultative-committee/>.

Mr Silver has also confirmed that the next meetings of the CCC will be held in the first week of December in Tottenham and Coonamble.

AgQuip

Information regarding the project was also on display at this year's AgQuip in Gunnedah. Over the three days of the event it was great to be able to talk to a broad range of interested parties, including directly affected landowners and members of the community both local to the project and from further afield.



Information displays and pipeline construction model at the Narrabri & Warren Community drop-in sessions at the Crossing Theatre, Narrabri (left) and Kookaburra Kiosk, Warren (right).

Talking to the community

As of 30 September, APA has recorded over 1,500 interactions with landowners and other stakeholders regarding the Western Slopes Pipeline consisting of mail outs, letters, phone calls, emails and meetings. We will continue to focus on all stakeholders having access to relevant information in a timely fashion.

Community drop-in sessions

To coincide with the first CCC meetings, APA hosted Community drop-in sessions in both Narrabri and Warren. Members of APA's Land Access and Environmental Assessment teams were available at each session to answer questions from the public.

In addition to detailed maps of the proposed pipeline alignment, APA also had available pipeline offcuts and a detailed model of a typical pipeline construction "spread." This model is an excellent tool for explaining the various aspects of the construction process.

Field Surveys

Since early August APA's consultant team have been hard at work undertaking a range of field survey work. Activities completed to date include:

- Targeted Winter Fauna Surveys in late August
- Vegetation assessments to confirm the accuracy of existing vegetation mapping
- Cultural Heritage Survey - together with representatives of local Aboriginal groups, our archaeologists have traversed almost 250km of the proposed alignment
- Soil surveys including the collection of samples from a range of public roads and private properties along the alignment.

In October and November, further soil sampling will be completed in the Warren, Tottenham and Bobadah sections of the alignment, and detailed ecology surveys of both terrestrial and aquatic flora and fauna will commence. Where access to private property is required, suitable notice will be provided to landholders in accordance with condition of all entry agreements or the Authority to Survey (ATS) where applicable.

Local gas supply opportunities

As part of the development of the Western Slopes Pipeline Project, APA is in the early stages of investigating the feasibility of delivering natural gas as an alternative energy source to end users in the surrounding region. In the current environment of rising electricity prices, natural gas has the potential to provide a cost effective alternative energy source for agriculture, industry and mining users as a replacement for existing electric or diesel fuelled plant, equipment and machinery.

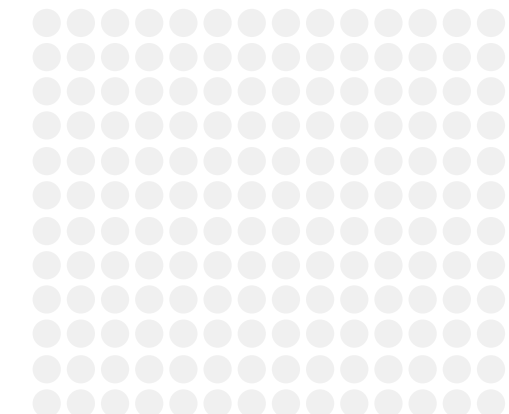
The types of scenarios that could be considered include:

- Potential offtakes to supply major agricultural, mining and industrial users within proximity of the alignment
- Farm taps for landowners with potential gas demand adjacent to the alignment (i.e. feedlots, irrigators, cotton gins)
- Opportunities to provide gas to users across the broader region through one or more Compressed Natural Gas (CNG) filling stations or similar.

In coming months, APA will be sending out information sheets to landowners along the pipeline alignment and other major energy users in the region to gauge the potential demand for natural gas supply. Any identified opportunities will need to be subject to further detailed design and commercial assessments.

When the Central Ranges Pipeline was constructed between Dubbo and Tamworth a number of landowners, including irrigators and a feedlot, elected to install gas offtakes to supply natural gas to their properties. These landowners have since enjoyed the benefit of lower energy costs by reducing their reliance on diesel and grid electricity.

Existing farm tap on the Central Ranges Pipeline



did you know?

- LPG is currently used by Cotton Gins throughout the region to fuel processing equipment. Natural gas is a potentially cost effective alternative to LPG.
- Agricultural production relies on natural gas as the primary feed stock for urea based fertilizer and also for the production of pesticides.
- CNG has been used as a vehicle fuel in Australia for over 25 years including a number of urban bus fleets and for road freight.
- CNG is a cleaner fuel than diesel and many other traditional fuels, producing lower carbon dioxide emissions, greenhouse gas emissions and particulates.

project calendar:

Field Survey	Continuing through October and November
Tottenham Community Consultative Committee meeting and Community Drop-in Session	5 December 2017
Coonamble Community Consultative Committee meeting and Community Drop-in Session	6 December 2017
Target Date for EIS Submission	Early 2018

How can I find out more information, provide feedback or register a complaint?

If you wish to register any comments, find out more information or provide feedback about the project, please contact us by:

- Telephoning 1800 941 145 (free call 24 hours/7 days)
- Emailing us at westernslopespipeline@apa.com.au
- You can also complete an online enquiry form and find more information at: <https://www.apa.com.au/about-apa/our-projects/western-slopes-pipeline/>



energy. connected.